

# GROUT POWER SPONGES

## Grout Power Sponge

- continuous band sponging machine
- for sponging off cement grouts
- quickly cleans off grout
- from quarry tiles & pool surrounds
- granite sets & paviors
- leaves uniform & strong joint
- for external pavements & pedestrian areas
- saves up to 70% of grouting time & labour

The machines use a continuous sponge band that is fed through a water bucket and rollers; the excess sludge and water is squeezed out leaving the sponge clean to repeat the cycle

The Schwammfix machines are for cleaning cements and grouts from quarry tiles, external paviors, natural stone and granite sets

The grout is pumped or poured into the joint; the Schwammfix machine is used to pass over the newly grouted area and to sponge off the residue leaving a clean surface and compact joint

The machines will mechanically do the time consuming "hands and knees" job of removing cementitious and epoxy grout

SWM620P Power Sponge 4hp

Weight 62kg

Size WxL 55x97cm

Height 88cm

Sponge width 36cm

Prep rate 200m/hr

Vibration level 2.5m/s

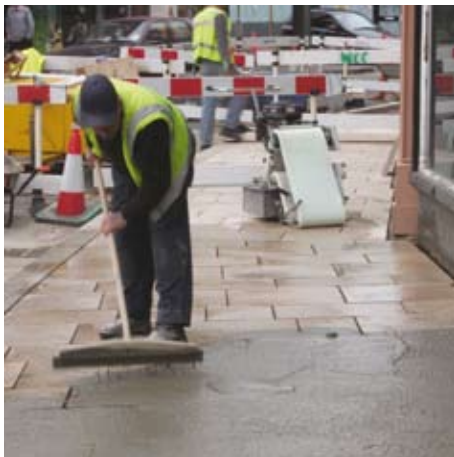
Noise level 76dBA



SWM620

## APPLICATIONS

cleaning tiles of cement residues	✓
sponging off grouts	✓
finishing granite sets	✓



## TILE GROUT POWER SPONGE

### TILE GROUT & FLOOR POWER CLEANER, petrol motor

Stock no	Description	Power	Weight	Sponge width	£ ex VAT
540620P	SWM620P 14" power sponge	4hp	62kg	36cm	1895.00

## REPLACEMENT SPONGES

### SPONGES, continuous band for cleaning off tiles, sets & paviors

Stock no	Description	Sponge width	£ ex VAT
540361	SWM620 14" sponge for cement	36cm	49.95